
Installation of finished Regupol® Rubber Flooring EVERROLL | EVERLAST | RUBBER GRANITE

Introduction

Information contained in this Technical Document is based on AS / NZ 1884 – 1985 Resilient Sheet and Tile Floor Coverings – Laying and Maintenance Practice in accordance with manufacturer’s recommendations and is written as a guide when handling and / or installing Regupol® Finished Rubber Flooring products.

IMPORTANT INFORMATION

Adhesion Test: The purpose of this test, when in doubt, is to determine the bond strength and adhesive transfer between Rubber Flooring, Regupol Adhesive and subfloor. This test should be a minimum duration of 72 hours. After this time, removal of the Regupol Rubber Flooring should be difficult along with some delamination, and Regupol Adhesive should remain bonded to both subfloor and Rubber Flooring.

Site Conditions: Areas where you will be installing Regupol Rubber Flooring must be weather tight at least 48 hours before commencing installation. Regupol Rubber Flooring is a finished product and installation should not commence until **all** other trades are complete. Should programming require other trades to work concurrently, suitable protection to installed Regupol Rubber Flooring should be sought.

Hydrostatic Pressure: Required bond strength with the subfloor is difficult to achieve where hydrostatic pressure is present. Provision for use of Regupol Two Part Water Based Epoxy Moisture Sealer is required where hydrostatic pressure is present.

Storage

- Ensure the Rubber Flooring rolls are not in direct contact with the ground.
- Rubber Flooring rolls should be laid flat and out of the elements.
- Rubber Flooring rolls should be stored in the shape of a pyramid.



NEVER STAND CYLINDER ON END

Preparation

Whatever the subfloor, it shall be confirmed by site inspection and testing that:

- Where necessary, the use of mechanical means to ensure subfloor is sound, smooth, straight, plane, level and dry, with nothing protruding through the surface to which the Rubber Flooring will be glue fixed.
- It does not contain deviations of more than 3mm when a 3m straight edge is placed on the surface in any direction.
- Where drainage is required, provision for adequate fall is to be made to prevent ponding.
- Existing concrete subfloors do not contain a moisture content exceeding 5.5% and new concrete subfloors have achieved a curing period of at least 30 days (or provision is made for application of Regupol Two Part Water Based Epoxy Moisture Sealer).
- Is free of dust, dirt, oil, grease, paint, chemicals, contaminations and any other matter that could affect the bond strength between the Regupol Rubber Flooring and Regupol Adhesive.
- Concrete subfloors should have a compressive strength of 25 MPA and cohesive bond strength of at least 1.5 MPA.

And for Regupol Rubber Flooring & Regupol Adhesive

- They have been conditioned on site at an ambient temperature between 15°C (60°F) and 26°C (80°F) for approximately 24 hours (in adverse climatic conditions a 7 day conditioning period may be necessary); and
- The above temperature range will be maintained while installing Regupol Rubber Flooring and curing of the Regupol Adhesive.
- Consult the Regupol Adhesive Product Range – Quick Reference as guide for suitable adhesive selection, along with reference to trowel size, spread rates, drying times etc.

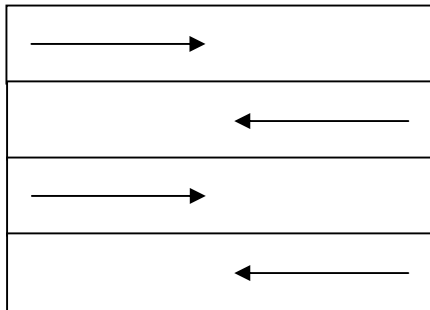
- Refer to applicable Product Data sheet for product application procedure.

MATERIAL HANDLING

- Before removing packaging, note in which direction the directional arrow is pointing.



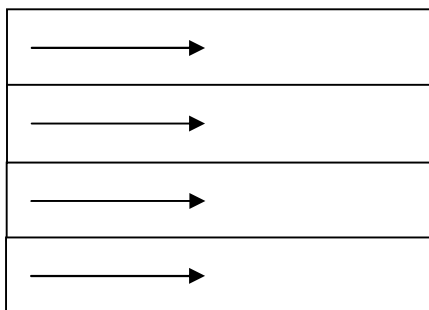
- **DO NOT** unroll in opposite direction.



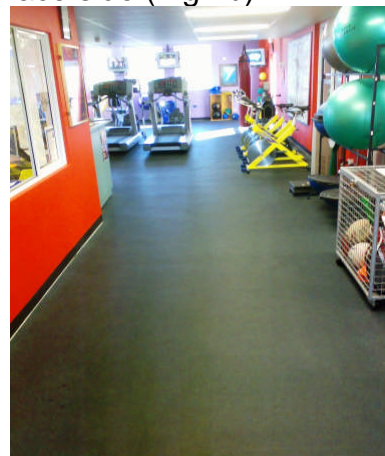
WRONG



- Regupol Rubber Flooring is directional and has a face side (Fig 2b)



RIGHT



INSTALLATION

- Ensure you roll out each roll in the same direction with face side up.



- Once entire floor area is loose laid, roll up each piece to expose subfloor for application of Regupol Adhesive.
- Snap a chalk line at centre of area where one factory edge of the rollout will line up.
- It is recommended you work outward from the middle – both with the Regupol Rubber Flooring and the area of installation.
- Before cutting, it is suggested to allow material to sit in place for at least 24 hours whilst acclimatization is achieved.
- Make provision for longer rollout at one end to accommodate for out of square walls.



- Providing the initial setout is well planned, it should only be necessary to trim each roll at one end.
- Trowel out Regupol Adhesive ensuring correct notch size and spread rate as per Product Data Sheet.
- Unroll the loose laid piece into the Regupol Adhesive and trim the extra material off the length.
- Typically, you have 20 to 30 minutes for positioning the Regupol Rubber Flooring piece into the Regupol Adhesive.
- Position the piece with the factory edge located precisely on the chalk line. Your first piece is now straight.
- Follow the same procedure described above with the rest of the Regupol Rubber Flooring pieces. It should not be necessary to snap additional chalk lines.

- When butting one roll to the next, overlap butt-joints by about 5mm.

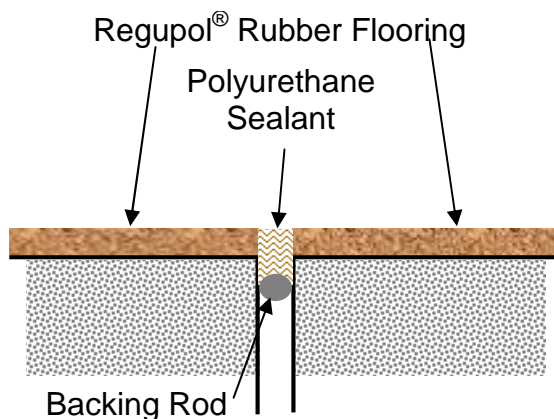


- Then begin 'working' the butt-joint with NO gaps.



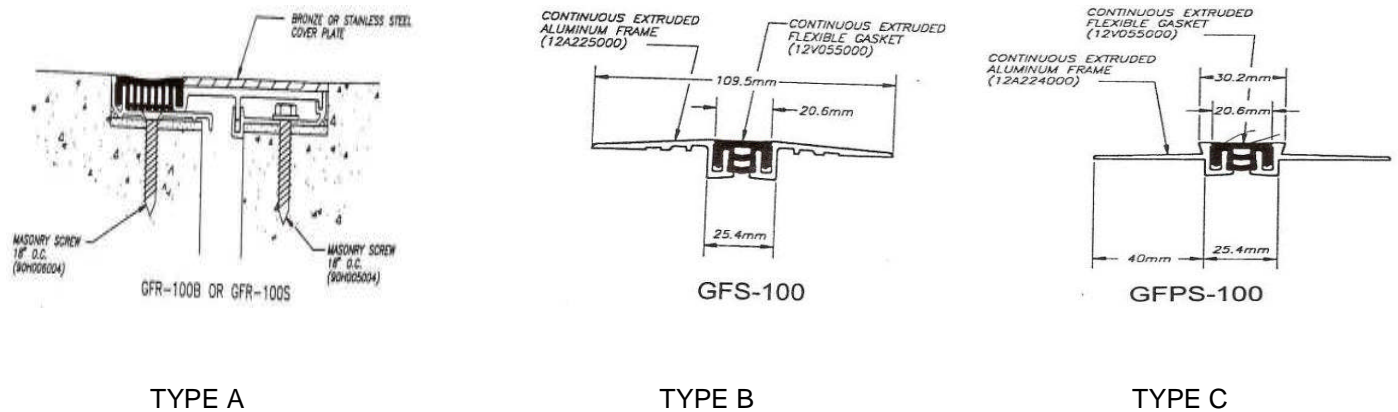
- When you get to the last piece, trim back the edge finishing against the wall just enough to allow for a firm fit.
- Do not run Regupol Rubber Flooring over structural control joints.
- Structural control joints should be raked clean and filled with a suitable mastic polyurethane sealant.
- Ensure Regupol Rubber Flooring is stopped flush with edge of control joint insert backing rod into position and polyurethane sealant fill to face of Regupol Rubber Flooring.

Figure 7 Installation over structural control joint



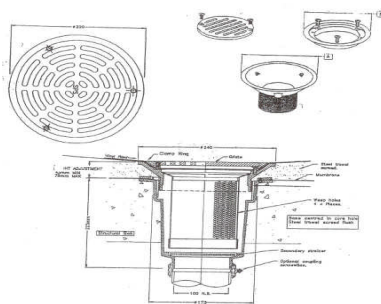
- Subject to architectural and structural requirements, the use of expansion joint sections can be used.

Figure 8 Expansion Joint Details



- Floor Wastes should be installed as per typical Floor Waste Drawing.

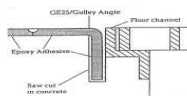
Figure 9 Floor Waste



- Rectangular or Square Drains and Floor Sinks can be dealt with as per figure 7; however, preferred method is by use of Gully Angle.

Figure 10 – Gully Angle

GULLY ANGLE
 GULLY ANGLE CAN BE INSTALLED AROUND THE PERIMETER OF SQUARE OR RECTANGLE DRAINS OR FLOOR SINKS PROVIDING THE AREA IS FREE FROM ANY FOREIGN SUBSTANCES AND DRY DURING THE INSTALLATION AND ADHESIVE SETTING PROCESS. SAW CUTTING MUST BE MADE INTO THE CONCRETE TO ACCOMMODATE THE PORTION OF THE GULLY ANGLE TO PENETRATE INTO THE FLOOR SURFACE AS ILLUSTRATED BELOW.



RECTANGULAR OR SQUARE DRAINS & FLOOR SINKS



- Once you finish installation of Regupol Rubber Flooring, roll entire area repeatedly using a 25kg carpet roller to ensure maximum adhesion between Regupol Rubber Flooring and Regupol Adhesive.
- *NOTE: It is not recommended to roll 3mm Rubber Granite due to the risk of Regupol Adhesive bleeding through the pores in the material. Instead ensure good transfer by applying pressure to the face of Regupol Rubber Flooring with brush side of broom.*
- You should exercise care and not allow any adhesive onto the face side or allow adhesive to 'bleed' through butt-joints or product itself by excessive over rolling.
- Be sure to weight down or tape any area or edge of the Regupol Rubber Flooring that appears to not be bonding to the subfloor.
- Weight should be placed on top of seams to avoid edges from curling up.
- Taping of seams etc is recommended where polyurethane sealant is being applied.
- DO NOT walk on 3mm Rubber Granite while adhesive is wet.
- You should use methylated spirits to carefully wipe off any wet adhesive that gets on the face side of the rubber, any tools or your hands.

PROTECTION

- Regupol® Rubber Flooring does not come with a factory pre-coated finish. Therefore, provision for protection should be made to ensure no damage by, or from, heavy duty construction activities or debris.

CLEANING & MAINTENANCE

Maintenance program

As with all flooring, regular cleaning is necessary. Frequency of cleaning can be determined by defining areas as either heavy, medium or light traffic. This will facilitate for the correct maintenance program to be implemented.

Vacuum Cleaning

The most common and basic part of cleaning of flooring is vacuuming. Regupol® Rubber Flooring should be vacuumed as required using a high air flow vacuum power head with a rotating cylindrical brush. It is advantageous for sites to have a wet/dry vacuum at hand. Frequency of vacuuming is dictated by the maintenance program.

Mechanical Cleaning

Regupol recommends that large areas be cleaned using an auto scrubber. In an area where large walk behind machines are not required, good results are achieved with the use of a machine similar to Rotowash or Duplex machine. The contra rotating brushes walk and scrub then return the dirty water to the machine, leaving the floor clean and dry enough to walk on within about 2 minutes.

Chemicals and Detergents

Regupol recommends that a neutral ph detergent is used on all its products. If unusual soiling has occurred please refer to your state distributor for information. When using the cleaning solution, check the mixing ratio and pre-spray onto the floor surface using a portable pressure spray. Allow the cleaning solution a dwell time on the floor surface of about 3-5 minutes. Now proceed to machine wash the floor using warm clean water in the machine solution tank.

Approved spotters, deodorizers and maintenance chemicals can be used on Regupol® Rubber Flooring, refer to your distributor for information.

TROUBLESHOOTING

Problem		Recommendation
Spillage	Dry	Vacuum thoroughly, then Rotowash.
	Wet	Mop up spill immediately and clean affected area.
Chewing Gum, Plasticine, Sweet or Sugar Residue		Freeze with proprietary aerosol, break off brittle pieces, wipe sparingly with approved natural solvent if necessary. Wash/extract immediately using warm water.
Faeces, Vomit, Blood, Urine		Remove excess. Wash/extract thoroughly. Spray area with appropriate treatments.
Fatty Foods, Cooking Oil/Fat		Pre-spray with recommended solution, wash with warm water.
Paints	Water Based	Scrape or mop up excess and immediately thoroughly wash/extract.
	Spirit Based	Scrape then wipe with methylated spirits moistened cloth and immediately clean thoroughly with Rotowash. Refer to your distributor for more information.
Dirt Build Up	Aquatic Areas	Pre-spray with approved solution.
	Dry Areas	Pre-spray with approved solution.
	Wash/extract regularly and thoroughly using clean water.	

Note: Where detergent is used, always wash thoroughly with plain water.

Warning: Certain substances may discolour even damage Regupol® Flooring including, but not limited to:

- Dyes or pigments;
- Strong acids, eg battery acid;
- Strong alkalis, eg oven-cleaner
- Some solvents;
- Substances hotter than 200°C;
- Urine, faeces – certain instances of incontinence may discolour Regupol® Rubber Flooring;
- Stiletto heels, uncapped chairs, stool legs etc

N.B For approved chemicals and advice, always refer to your state distributor.